

# **Advanced Hardware Technologies**

## **PS-1 to NP-1 Conversion Instructions**



### **SYSTEM OVERVIEW**

This conversion kit is designed to convert a PS-1 power supply, so it can work like the NP-1 power supply. This will enable this to be used with the AHT MEL-1 motor retraction system. The conversion kit and the MEL-1 each contain a computer that is constantly monitoring the status of the system. This communication is done using the RED and BLACK power wire that runs in between the conversion kit and the MEL-1 retraction mechanism

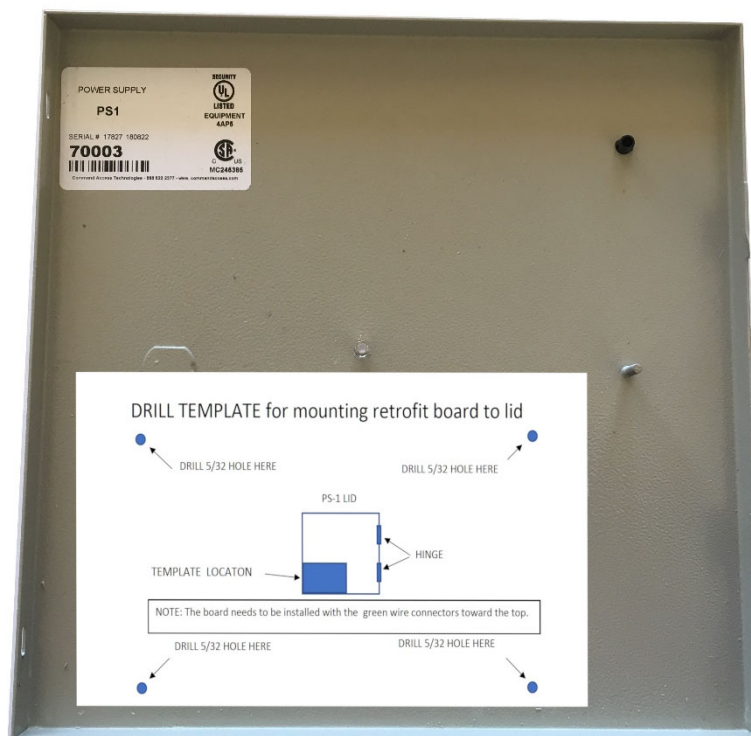
### **FEATURES & SPECIFICATIONS**

- Input voltage – 24-27.5 Vdc, 1.5 A
- Output rated 24-27.5 Vdc, 1.5 A
- (1) LEDS that monitor power
- (1) LEDS that monitor input status
- (1) LEDS that monitor:
  - RX status
  - Communication status
- Temperature range – 0 to 49 C

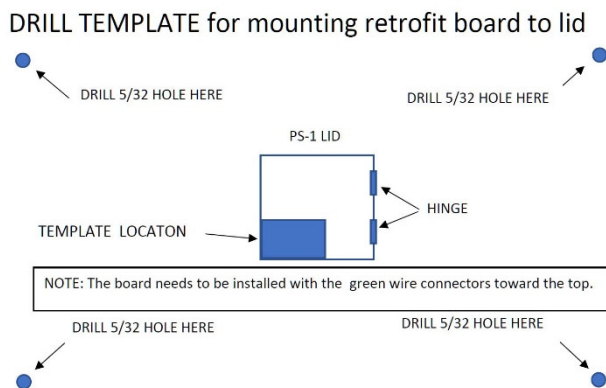
### **KIT CONTAINS**

1. NP-1 Conversion board
2. Two 12 vdc batteries
3. Wires to connect PS-1 to conversion board (Yellow Tag)
4. Wire loop for input on PS-1 (Green Tag)
5. Wires to connect batteries to conversion board (Red Tag)
6. Wire loop for batteries (Blue Tag)
7. Template for mounting conversion board to lid of PS-1
8. Wiring Diagram

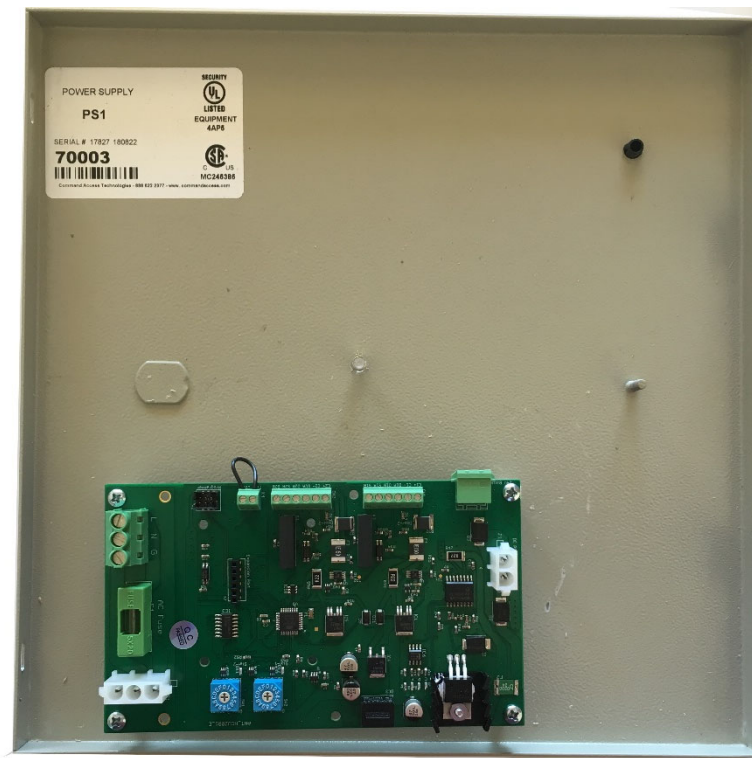
**1. Install template in lid of PS-1 as pictured.**



**2. Drill 5/32 holes where indicated on the template**



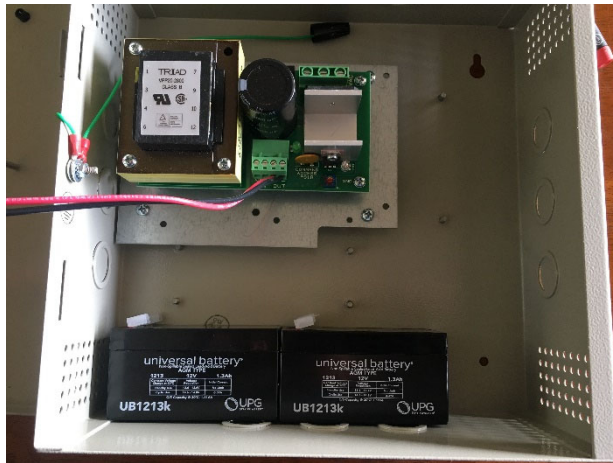
3. Remove template and mount conversion board into the holes that were just drilled.  
Please note the orientation of the board.



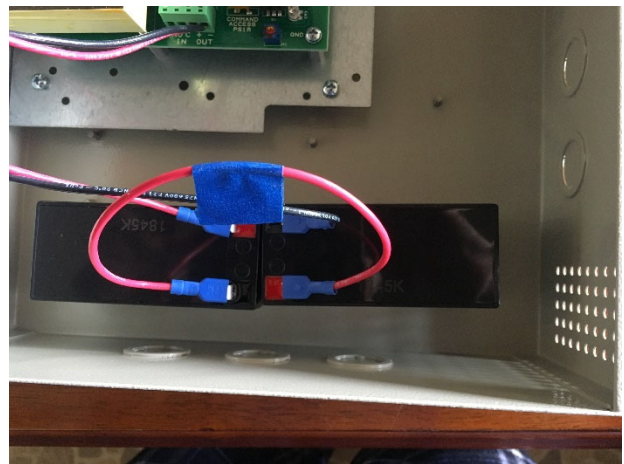
4. Connect the yellow tagged wire to the out connector on the PS-1. Connecting the red wire to the positive connection and the black wire to the negative. Connect the white plug to the conversion board. (See wiring diagram)



5. Install the two batteries in the bottom of the PS-1 power supply box

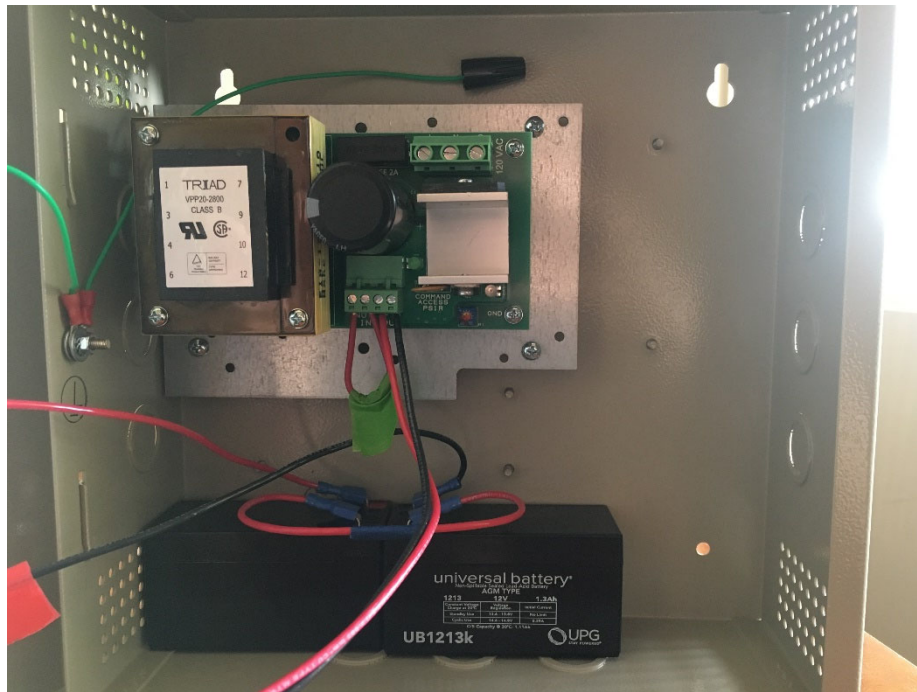


6. Connect the red tagged wire to the conversion board. Connect the red wire to battery 1 red terminal and connect the black wire to battery 2 black terminal. Connect the blue tagged wire to the black terminal of battery one and the red terminal on battery 2. (See Diagram)





7. Connect the green tagged wire to the input on the PS-1. (see Diagram)



Wire Diagram

Advanced Hardware Technologies, LLC

Wiring Diagram

Original PS-1

Add-on Board

